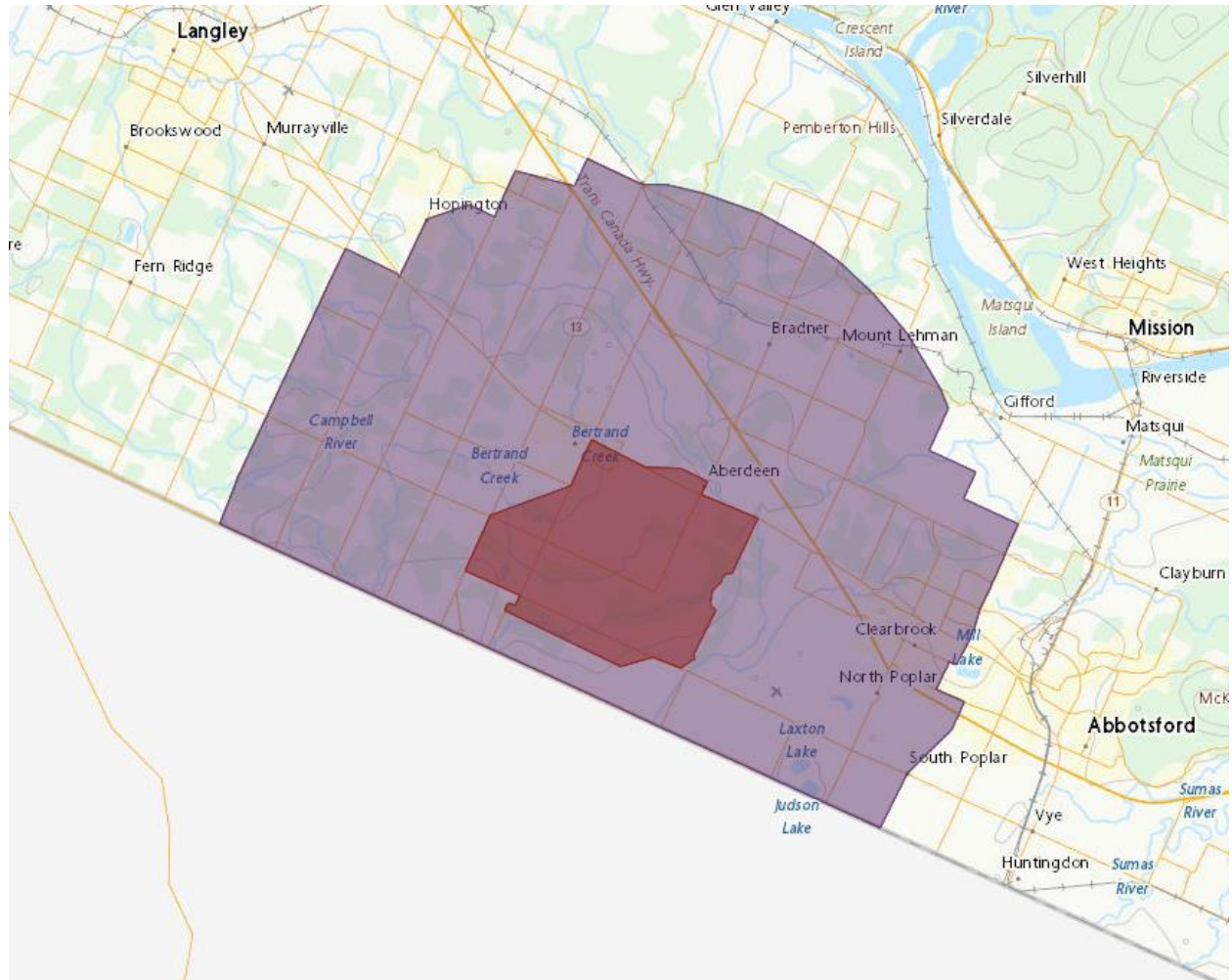


AI Permitting Details for Producers/Growers

To prevent the spread of highly pathogenic avian influenza (HPAI), the Canadian Food Inspection Agency (CFIA) has established primary control zones (PCZ) in the areas where the disease has been identified. Within the PCZ is an Infected Zone (0-3 km from the infected premise) and a Restricted Zone (3-10 km from the infected premise). The below map shows the current PCZ in the Fraser Valley.



Flock Health Questionnaires (FHQs) and Permits are required for those within the Infected and Restricted Zones for approved movements of birds, their products and by-products, as well as things exposed to birds such as litter and manure. These documents are being submitted to the Permit Office set up and staffed by the BC Egg, BC Hatching Egg, BC Chicken and BC Turkey groups.

Flock Health Questionnaire

Producers within the PCZ are required to submit a weekly Flock Health Questionnaire (FHQ) to both the CFIA at and the Permit Department at movementpermit@bcegg.com – preferably on Thursday or Friday. This information must be submitted in order for permits to be approved by CFIA. One form should be completed for each premise and include all barns with birds in it. It is also important that all fields are

filled out. If a field does not apply to you, put "NA." Please do not send your normal flock health records as they contain more information than what CFIA needs.

Flock Health Questionnaires must also be submitted within 24 hours of your expected fowl removal or shipping birds for slaughter.

You can find the [FHQ here](#). There is also a Completion Guide (attached to this message) available to help you fill out the form.

Permits

Permits within the Infected and Restricted Zones are required for approved movements of birds, their products and by-products, as well as things exposed to birds. There are two permits available, a [general permit](#) and a [specific permit](#).

The companies picking up the birds, eggs or materials are responsible for completing and submitting the permit. **Producers are not required to do this work.**

Permits are being submitted to CFIA by the Permitting Department for approval in priority sequence (slaughter- placements- egg picks- manure) until further notice.

Questions

Media enquiries can be directed to: Amanda Brittain 778.386.1917

Questions about permits for other commodities can be directed to:

BC Chicken info@bcchicken.ca

BC Turkey auditor@bcturkey.com

BC Hatching Egg onfarmtech@bcbhec.com

BC Egg nicolet@bcegg.com