

# INSTRUCTIONS FOR WHITE WASH TECHNIQUE w/ PICTURES





- Hydrated (slaked) Lime
- Table Salt
- Warm Water
- Measuring Cup
- Bucket for Mixing
- Drill w/ Mixer Attachment

- Sprayer OR Sump Pump & Hose
- Large Bucket for use with Sump Pump & Hose (if using)
- Masks & Eye Protection
- Disposable or Rubber Gloves







SPRAYER



SUMP PUMP

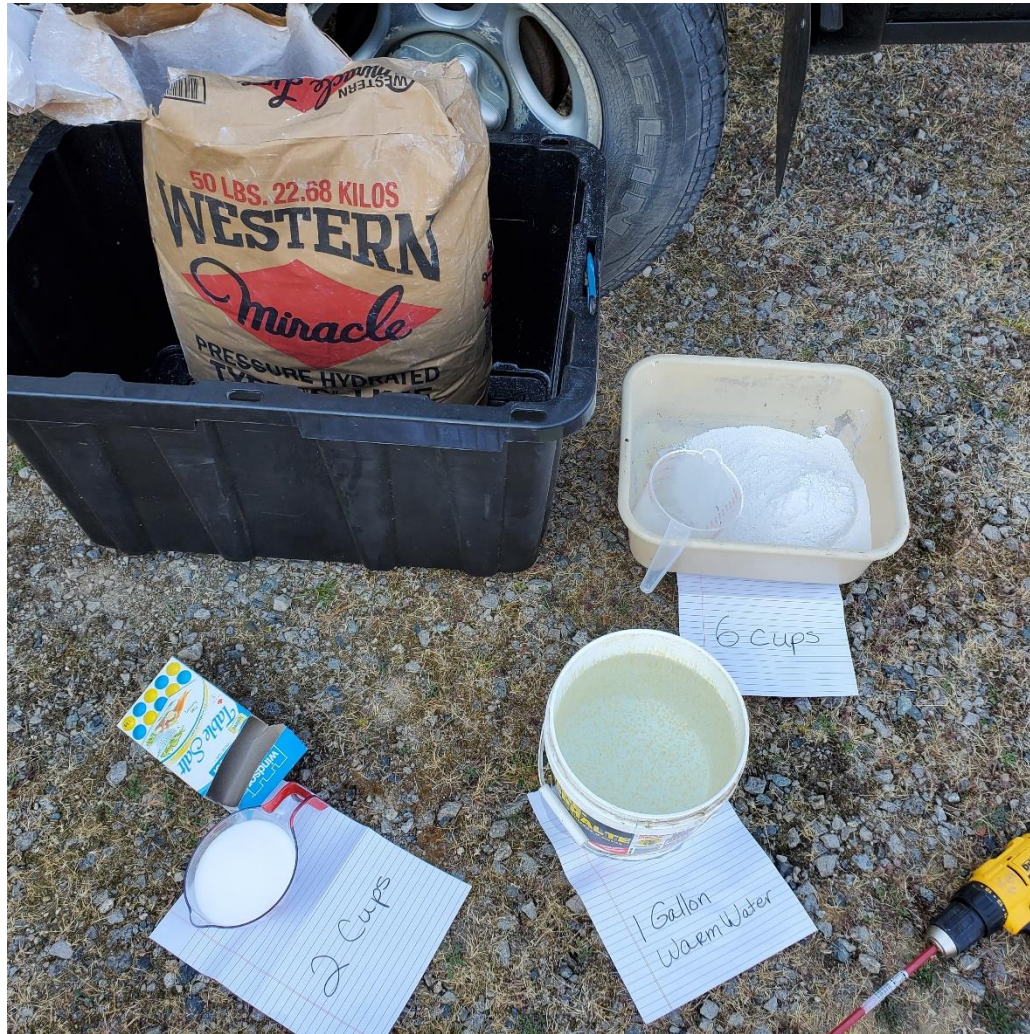


BUCKET for  
use w/ SUMP  
PUMP



PUMP & HOSE





- 2 CUPS TABLE SALT
- 6 CUPS HYDRATED (SLAKED) LIME
- 1 GALLON WARM WATER

**NOTE:**

WHITE WASH SOLUTION WILL BE SAFE FROM FREEZING TO APPROXIMATELY:

- $-9^{\circ}\text{C}$  WHEN USING 2 CUPS OF TABLE SALT
- IF YOU ADD 4 CUPS (TOTAL) OF TABLE SALT WHEN MIXING THE SOLUTION IT WILL BE SAFE FROM FREEZING TO APPROXIMATELY  $-18^{\circ}\text{C}$



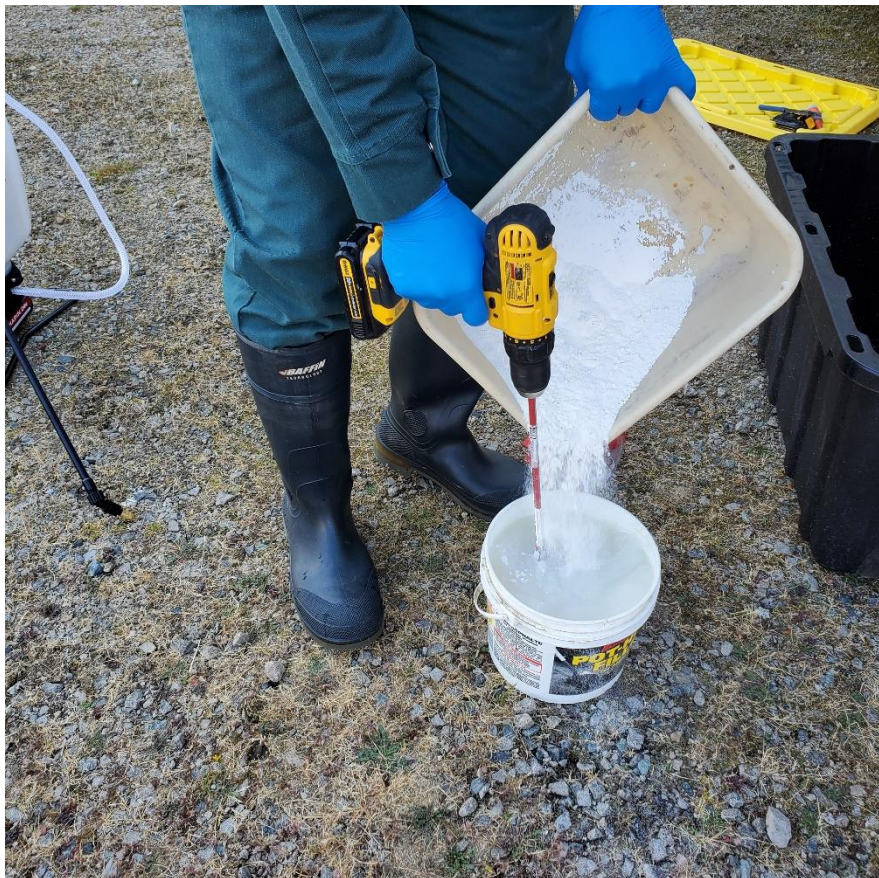


USE MIXER ATTACHMENT  
TO AGITATE WATER



ADD 2 CUPS TABLE SALT  
WHILE MIXING





ADD 6 CUPS  
HYDRATED (SLAKED) LIME  
WHILE MIXING



MIX WELL





ADD ENTIRE MIXTURE TO SPRAYER









APPLY MIXTURE TO SURFACE STARTING FROM TOP TO BOTTOM





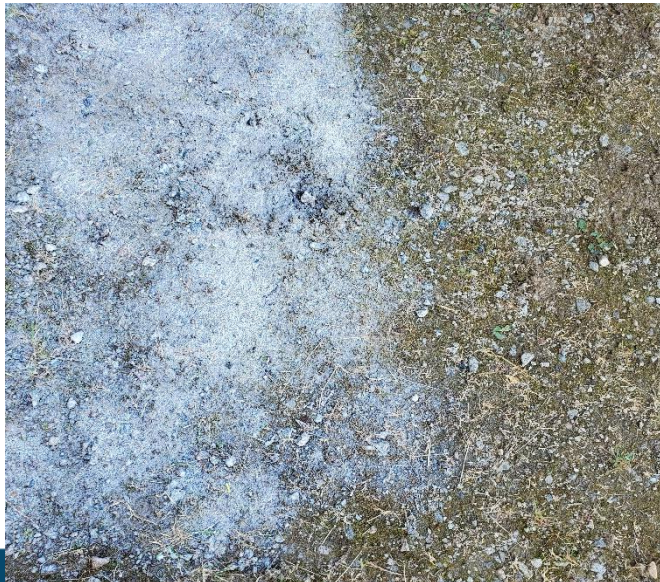
COVER ENTIRE SURFACE INCLUDING SURROUNDING AREA





BEFORE & AFTER





**DISINFECTING GROUND AREA:  
SPRAY ENTIRE AREA USING SIDE TO SIDE SWEEPING  
MOTION TO COMPLETELY COVER AREA WITH MIXTURE**





DIFFERENT SURFACES  
AFTER APPLICATION





IF USING SUMP PUMP & HOSE,  
ATTACH HOSE TO PUMP.



SUBMERGE PUMP INTO MIXTURE





WHETHER USING SPRAYER OR PUMP & HOSE;  
USE SAME TECHNIQUE – WORK TOP TO BOTTOM

COVER ENTIRE SURFACE INCLUDING  
SURROUNDING AREA & GROUND





BOARDS AFTER  
24 HRS



BEFORE & AFTER  
(24 HRS)

GROUND AFTER  
24 HRS



NOTE: SURFACES WILL CONTINUE TO  
BECOME WHITER DURING DRY TIME  
(24 HRS)





METAL SIDING AFTER 24 HRS





METAL SIDING AND GROUND AFTER 2 WEEKS